

Tibor Károlyi

PLAY

THE

DUTCH!

PART 2



Chess
Evolution

Cover designer
Piotr Pielach
Chess pieces by Ingram Image

Typesetting
i-Press <www.i-press.pl>

First edition 2018 by Chess Evolution

Play the Dutch! Part 2
Copyright © 2018 Chess Evolution

All rights reserved. No part of this publication may be reproduced, stored in a retrieval system or transmitted in any form or by any means, electronic, electrostatic, magnetic tape, photocopying, recording or otherwise, without prior permission of the publisher.

ISBN 978-615-5793-09-7

All sales or enquiries should be directed to Chess Evolution
2040 Budaors, Nyar utca 16, Magyarorszag

e-mail: info@chess-evolution.com
website: www.chess-evolution.com

Printed in Hungary

TABLE OF CONTENTS

KEY TO SYMBOLS.....	7
PREFACE.....	9
CHAPTER 1. 3.g3 ♖f6 4. ♘g2 ♘g7 WHITE'S SETUPS WITHOUT c4.....	11
1.d4 f5 2. ♖f3 ♖f6 3.g3 g6 4. ♘g2 ♘g7 and White plays an early b4	11
1.d4 f5 2. ♖f3 ♖f6 3.g3 g6 4. ♘g2 ♘g7 5.0-0 0-0	15
1.d4 f5 2. ♖f3 ♖f6 3.g3 g6 4. ♘g2 ♘g7 5.0-0 0-0 6. ♖bd2.....	17
1.d4 f5 2. ♖f3 ♖f6 3.g3 g6 4. ♘g2 ♘g7 5.c3 and 5.0-0 with 6.c3	20
1.d4 f5 2. ♖f3 ♖f6 3.g3 g6 4. ♘g2 ♘g7 5.0-0 0-0 6.c3 e6	25
1.d4 f5 2. ♖f3 ♖f6 3.g3 g6 4. ♘g2 ♘g7 5.b3 0-0 6. ♘b2 d6 7.c4 c6	27
1.d4 f5 2. ♖f3 ♖f6 3.g3 g6 4. ♘g2 ♘g7 5.b3 0-0 6. ♘b2 d6 7.0-0	32
1.d4 g6 2. ♖f3 f5 3.g3 ♖f6 4. ♘g2 ♘g7 5.0-0 0-0 6.b3 d6 7. ♘b2 c6 8. ♖bd2 ♖a6 and 8... ♗c7	38
1.d4 f5 2. ♖f3 ♖f6 3.g3 g6 4. ♘g2 ♘g7 5.0-0 0-0 6.b3 d6 7. ♘b2 c6 8. ♖bd2 a5!?	42
CHAPTER 2. WHITE PLAYS 2.g3 WITHOUT ♖f3	47
1.d4 f5 2.g3 ♖f6 3. ♘g2 g6 4.e3 ♘g7 5.c4 0-0 6. ♖c3 d6 7. ♖ge2 c6 and 7...e5 47	
1.d4 f5 2.g3 ♖f6 3. ♘g2 g6 4.h4 ♘g7.....	51
1.d4 f5 2.g3 ♖f6 3. ♘g2 g6 4. ♖c3 d5	55
1.d4 f5 2.g3 ♖f6 3. ♘g2 g6 4. ♖d2 ♘g7 5.c3 and 5. ♖h3	58
1.d4 f5 2.g3 ♖f6 3. ♘g2 g6 4. ♖d2 ♘g7 5.e4 fxe4 6. ♖xe4 ♖xe4 7. ♘xe4 d5 and 7...0-0	62
1.d4 f5 2.g3 ♖f6 3. ♘g2 g6 4.c3 ♖c6, 4...d6 and 4... ♘g7	65
1.d4 f5 2.g3 ♖f6 3. ♘g2 g6 4.c3 ♘g7 5. ♗b3 ♖c6 6. ♖d2.....	70
1.d4 f5 2.g3 ♖f6 3. ♘g2 g6 4. ♖h3	74
CHAPTER 3. WHITE PLAYS 2.c4 3. ♖c3 4.g3 WITH ♖h3	79
1.d4 f5 2.g3 ♖f6 3. ♘g2 g6 4. ♖h3 ♘g7	79
1.d4 f5 2.c4 ♖f6 3.g3 g6 4. ♘g2 ♘g7 5. ♖c3 0-0 6.e4 and 6. ♖h3 ♖c6.....	85
2.c4 ♖f6 3.g3 g6 4. ♘g2 ♘g7 5. ♖c3 0-0 6. ♖h3 ♖c6 7.0-0 d6	89
2.c4 ♖f6 3.g3 g6 4. ♘g2 ♘g7 5. ♖c3 0-0 6. ♖h3.....	94

1.d4 f5 2.c4 ♘f6 3.g3 g6 4. ♙g2 ♙g7 5. ♘c3 o-o 6. ♘h3 d6 7.d5 ♘a6 8.o-o ♙d7 and 8... ♘c5	98
1.d4 f5 2.c4 ♘f6 3.g3 g6 4. ♙g2 ♙g7 5. ♘c3 o-o 6. ♘h3 d6 7.d5 ♘a6 8.o-o ♘c5 9. ♘f4 e5 10.dxe6 c6	104

CHAPTER 4. 7...c6 MAIN LINE (SIDELINES) 109

1.d4 f5 2.c4 ♘f6 3. ♘c3 g6 4. ♘f3 ♙g7 5.g3 o-o 6. ♙g2 d6 7.o-o c6	109
2.c4 ♘f6 3. ♘c3 g6 4. ♘f3 ♙g7 5.g3 o-o 6. ♙g2 d6 7.o-o c6 8.b4	114

CHAPTER 5. 7...c6 MAIN LINE 8. ♚b3 119

1.d4 f5 2.c4 ♘f6 3. ♘c3 g6 4. ♘f3 ♙g7 5.g3 o-o 6. ♙g2 d6 7.o-o c6 8. ♚b3 ♘a6	119
1.d4 f5 2.c4 ♘f6 3. ♘c3 g6 4. ♘f3 ♙g7 5.g3 o-o 6. ♙g2 d6 7.o-o c6 8. ♚b3 ♘h8	122
1.d4 f5 2.c4 ♘f6 3. ♘c3 g6 4. ♘f3 ♙g7 5.g3 o-o 6. ♙g2 d6 7.o-o c6 8. ♚b3 ♘h8 9. ♚d1 ♘a6 and 9... ♚c7	125
1.d4 f5 2.c4 ♘f6 3. ♘c3 g6 4. ♘f3 ♙g7 5.g3 o-o 6. ♙g2 d6 7.o-o c6 8. ♚b3 ♘a6 9. ♚d1 ♘h8 10. ♚a3 ♚e8 and 10... ♘c7	129

CHAPTER 6. 7...c6 MAIN LINE 8. ♚b1 135

1.d4 f5 2.c4 ♘f6 3. ♘c3 g6 4. ♘f3 ♙g7 5.g3 o-o 6. ♙g2 d6 7.o-o c6 8. ♚b1 ♘a6	135
1.d4 f5 2.c4 ♘f6 3. ♘c3 g6 4. ♘f3 ♙g7 5.g3 o-o 6. ♙g2 d6 7.o-o c6 8. ♚b1 ♘a6 9.b4	138
1.d4 f5 2.c4 ♘f6 3. ♘c3 g6 4. ♘f3 ♙g7 5.g3 o-o 6. ♙g2 d6 7.o-o c6 8. ♚b1 ♘bd7 and 8... ♘h8	142
1.d4 f5 2.c4 ♘f6 3. ♘c3 g6 4. ♘f3 ♙g7 5.g3 o-o 6. ♙g2 d6 7.o-o c6 8. ♚b1 ♚c7!?	145

CHAPTER 7. 7...c6 MAIN LINE 8. ♚e1 151

1.d4 f5 2.c4 ♘f6 3. ♘c3 g6 4. ♘f3 ♙g7 5.g3 o-o 6. ♙g2 d6 7.o-o c6 8. ♚e1 ♘e4	151
1.d4 f5 2.c4 ♘f6 3. ♘c3 g6 4. ♘f3 ♙g7 5.g3 o-o 6. ♙g2 d6 7.o-o c6 8. ♚e1 ♘a6	158
1.d4 f5 2.c4 ♘f6 3. ♘c3 g6 4. ♘f3 ♙g7 5.g3 o-o 6. ♙g2 d6 7.o-o c6 8. ♚e1 ♘a6 9.b3	162

CHAPTER 8. 7...c6 MAIN LINE 8. ♖c2.....	167
1.d4 f5 2.c4 ♘f6 3. ♘c3 g6 4. ♘f3 ♙g7 5.g3 0-0 6. ♙g2 d6 7.0-0 c6	
8. ♖c2 ♖c7.....	167
1.d4 f5 2.c4 ♘f6 3. ♘c3 g6 4. ♘f3 ♙g7 5.g3 0-0 6. ♙g2 d6 7.0-0 c6	
8. ♖c2 ♘a6.....	171
1.d4 f5 2.c4 ♘f6 3. ♘c3 g6 4. ♘f3 ♙g7 5.g3 0-0 6. ♙g2 d6 7.0-0 c6	
8. ♖c2 ♘a6 9.a3.....	175

CHAPTER 9. 7...c6 MAIN LINE 8.b3.....	179
1.d4 f5 2.g3 ♘f6 3. ♙g2 g6 4. ♘f3 d6 5.0-0 ♙g7 6.c4 c6 7. ♘c3 0-0	
8.b3 ♖a5.....	179
1.d4 f5 2.c4 ♘f6 3. ♘c3 g6 4. ♘f3 ♙g7 5.g3 0-0 6. ♙g2 d6 7.0-0 c6	
8.b3 ♖a5 9. ♙b2.....	183
1.d4 f5 2.c4 ♘f6 3. ♘c3 g6 4. ♘f3 ♙g7 5.g3 0-0 6. ♙g2 d6 7.0-0 c6	
8.b3 ♖c7.....	188
1.d4 f5 2.c4 ♘f6 3. ♘c3 g6 4. ♘f3 ♙g7 5.g3 0-0 6. ♙g2 d6 7.0-0 c6	
8.b3 ♘a6.....	193
1.d4 f5 2.c4 ♘f6 3. ♘c3 g6 4. ♘f3 ♙g7 5.g3 0-0 6. ♙g2 d6 7.0-0 c6	
8.b3 ♘a6 9. ♙b2 ♖c7 10.d5.....	196
1.d4 f5 2.c4 ♘f6 3. ♘c3 g6 4. ♘f3 ♙g7 5.g3 0-0 6. ♙g2 d6 7.0-0 c6	
8.d5 ♖c7.....	200
1.d4 f5 2.c4 ♘f6 3. ♘c3 g6 4. ♘f3 ♙g7 5.g3 0-0 6. ♙g2 d6 7.0-0 c6	
8.d5 e5.....	204
1.d4 f5 2.c4 ♘f6 3. ♘c3 g6 4. ♘f3 ♙g7 5.g3 0-0 6. ♙g2 d6 7.0-0 c6	
8.d5 e5 9.dxe6 ♙xe6.....	209
1.d4 f5 2.c4 ♘f6 3. ♘c3 g6 4. ♘f3 ♙g7 5.g3 0-0 6. ♙g2 d6 7.0-0 c6	
8.d5 e5 9.dxe6 ♙xe6 10. ♙f4.....	212
1.d4 f5 2.c4 ♘f6 3. ♘c3 g6 4. ♘f3 ♙g7 5.g3 0-0 6. ♙g2 d6 7.0-0 c6	
8.d5 e5 9.dxe6 ♙xe6 10.b3 ♖e8.....	216
1.d4 f5 2.c4 ♘f6 3. ♘c3 g6 4. ♘f3 ♙g7 5.g3 0-0 6. ♙g2 d6 7.0-0 c6	
8.d5 e5 9.dxe6 ♙xe6 10.b3 ♘a6.....	221
1.d4 f5 2.g3 ♘f6 3. ♙g2 g6 4.c4 ♙g7 5. ♘c3 0-0 6. ♘f3 d6 7.0-0 c6	
8.d5 e5 9.dxe6 ♙xe6 10.b3 ♘a6 11. ♘g5.....	224
1.d4 f5 2.c4 ♘f6 3. ♘c3 g6 4. ♘f3 ♙g7 5.g3 0-0 6. ♙g2 d6 7.0-0 c6	
8.d5 e5 9.dxe6 ♙xe6 10.b3 ♘a6 11. ♙b2.....	229
1.d4 f5 2.c4 ♘f6 3. ♘c3 g6 4. ♘f3 ♙g7 5.g3 0-0 6. ♙g2 d6 7.0-0 c6	
8.d5 e5 9.dxe6 ♙xe6 10.b3 ♘a6 11. ♙b2 ♖e7 12. ♘g5.....	234

CHAPTER 10. 7...c6 MAIN LINE 8.d5 e5 9.exd5 ♖xe6 10.♔d3.....	239
1.d4 f5 2.c4 ♗f6 3.♗c3 g6 4.♗f3 ♖g7 5.g3 o-o 6.♖g2 d6 7.o-o c6 8.d5 e5 9.dxe6 ♖xe6 10.♔d3 ♗g4	239
1.d4 f5 2.c4 ♗f6 3.♗c3 g6 4.♗f3 ♖g7 5.g3 o-o 6.♖g2 d6 7.o-o c6 8.d5 e5 9.dxe6 ♖xe6 10.♔d3 ♗e8	243
1.d4 f5 2.c4 ♗f6 3.♗c3 g6 4.♗f3 ♖g7 5.g3 o-o 6.♖g2 d6 7.o-o c6 8.d5 e5 9.dxe6 ♖xe6 10.♔d3 ♗a6 11.♖f4.....	249
1.d4 f5 2.c4 ♗f6 3.♗c3 g6 4.♗f3 ♖g7 5.g3 o-o 6.♖g2 d6 7.o-o c6 8.d5 e5 9.dxe6 ♖xe6 10.♔d3 ♗a6 11.♗g5.....	253
EPILOGUE	256

KEY TO SYMBOLS

=	Equality or equal chances
±	White has a slight advantage
∓	Black has a slight advantage
±	White is better
∓	Black is better
+-	White has a decisive advantage
-+	Black has a decisive advantage
∞	unclear
∞	with compensation
↔	with counterplay
↑	with initiative
→	with an attack
Δ	with the idea
□	only move
N	novelty
!	a good move
!!	an excellent move
?	a weak move
??	a blunder
!?	an interesting move
?!	a dubious move
+	check
#	mate

PREFACE

In the second volume we look at all the lines in which White plays g3 and develops the bishop to g2. This setup means that White doesn't plan to refute the Dutch defence, but is instead ready to play a slow game.

The bishop stands well on the long diagonal as it fits in against all the main Black systems: the Stonewall, the Il'yin-Zhenevsky, and it is also not at all bad against our Leningrad. The g2-square is the most popular place for the bishop and it is not without reason. When we develop the bishop to g7, Black usually tries to carry out ...e5 — and if possible reduce the g2-bishop's power by pushing the e-pawn again to e4.

But that is not the only pawn formation Black can choose. Black can also opt for the Leningrad Stonewall

with ...c6 and ...d5, or consider a Benoni-type pawn structure with ...c5. Black can also look to gain space on the queenside with ...c6, ...♘a6, ...♙d7 and ...b5. And these plans are not the whole story: in some cases Black can also play ...a5 and ...♘a6, while in addition some players like to act on the other wing with ...h6 and ...g5.

The black queen may go to e8, but sometimes to a5, and can remain on the same diagonal on c7 or b6. But the lady may also perform the role of putting pressure on d5 from f7, or to attack the king from h5. Such versatility is rare and very fascinating. I believe that, just as in the first book, this tour in slower lanes of the Leningrad Dutch waters will be very entertaining, and firmly believe that one can score well with this marvellous opening.

CHAPTER 1.

3.g3 ♘f6 4. ♖g2 ♗g7

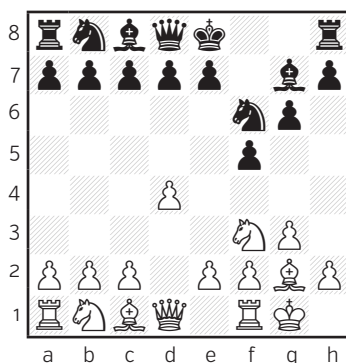
WHITE'S SETUPS WITHOUT c4

**1.d4 f5 2. ♗f3 ♘f6 3.g3
g6 4. ♖g2 ♗g7 and White
plays an early b4**

■ Game 1

▷ **Piotr Dobrowolski**
▶ **Vladimir Malaniuk**

Kochan Memorial, Koszalin 2013



1.d4 f5 2. ♗f3 ♘f6 3.g3

The fianchettoed bishop might become strong on the diagonal and may also defend the king—and in some cases help to carry out e4. But its fate can be a joy for Black also, for example if Black can bury it by pushing the f-pawn all the way to the sixth rank. Also, if Black can gain control of the d4-square and is able to use that square for the knight as an outpost, the knight on d4 can be a dream piece against the g2-bishop.

3...g6 4. ♖g2 ♗g7 5.o-o

White can hold back castling and begin with 5.b4 at once: White simply wants to gain space on the queenside.

However, it is more popular to do so after castling. White gives little as a target for Black to attack. 5...o-o 6. ♖b2 c6 Black gets ready to undermine the b4-pawn by ...a5. 7. ♗bd2 (7.c4 a5 8.a3 [8.b5 d5 9.cxd5 cxb5∞] 8... d5 9.c5 ♗e4 10. ♗bd2 b6=) 7...d5 8.c4

a) 8...dxc4 White's space is compensated by Black's control over the white squares. 9. ♗xc4 ♖e6 10. ♖c2 ♖d5 11.o-o ♗a6 12.a3 ♗c7 13. ♖ad1 Iotov,V-Van Oosterom,C, Enschede 2008 13... ♖e4 14. ♖c1 ♖d5 15. ♗cd2 (15. ♗e3 ♖b5=) 15...a5=

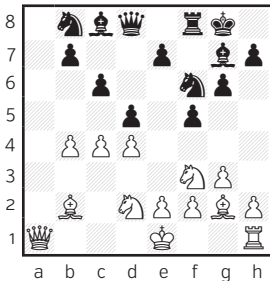
b) 8...♗e4 Black exerts pressure on the centre. 9.o-o ♖e6 10. ♖c2 Pelletier,Y-Miton,K, Reykjavik 2011 (10.c5 a5 11.a3 axb4 12.axb4 ♖xa1 13. ♖xa1

♖a6 14. ♖a3 ♖d7=) 10...a5 11.b5 cxb5
12.cxb5 a4=

c) 8...a5 Black tries to undermine
White's queenside.

c1) 9.bxa5 After this capture,
White's pawn chain is no better
than Black's. 9...♖xa5 10.o-o e6
(10...♖a4 11.cxd5 ♖xd1 12.♖fxd1
♗xd5 13.♗e5 ♗d7 14.a4 ♗b4=)
11.♖c2 ♗bd7 12.a4 ♖d8 13.e3 ♗e4
14.♖fc1 g5 15.♗a3 ♖f7 16.cxd5 exd5
17.♗b4 Lastin,A-Kim,A, Moscow
2002 17...c5 18.dxc5 ♗xa1 19.♖xa1
♖f6 20.♗d4 ♗e5=

c2) 9.a3 axb4 10.axb4 ♖xa1 11.♖xa1



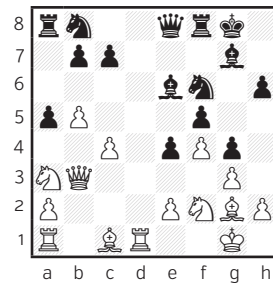
11...dxc4 Black isolates the b4-
pawn. 12.♗xc4 ♗a6 13.♖a5 ♗d5
14.b5 ♖xa5+ 15.♗xa5 cxb5 16.o-o
e6 (16...♗ac7 17.♖c1 b4 18.♗e5 ♗f6
19.e3 b6∞) 17.♗e5 ♗xe5 18.dxe5
♗c5= Gallego Alcaraz,A-Nijboer,F,
Barcelona 2015.

5...o-o 6.b4 c6

6...d6 Black can also play for ...e5, as
in many main lines.

a) 7.c4 e5 8.dxe5 (8.♗b2 e4 9.♗fd2
c6 10.♗b3 d5 11.♖c2 Ubienny-
kh,E-Muzychuk,A, Khanty-Mansi-
ysk 2014 11...♖e7) 8...dxe5

a1) 9.♖b3 e4 10.♗g5 (10.♖d1
♖e8 11.♗d4 ♗c6 12.♗b2 ♗xd4
13.♗xd4 ♗e6 and Black is a bit
better according to Malaniuk and
Marusenko.) 10...h6 (10...a5 11.♖d1
[11.c5+?? ♗d5-+]) 11...♖e7) 11.♖d1
♖e8 12.♗h3 g5 13.f4 g4 14.♗f2 ♗e6
15.♗a3 a5 16.b5



16...♗bd7 and Black was some-
what better in the game Korchnoi,V-Spassky,B,
St. Petersburg 1999.

a2) 9.♗b2 e4 This is an accomplish-
ment for Black. 10.♗d4 ♗g4 Black
devotes a tempo to exert pressure
on the long diagonal, although other
moves are also playable.

a21) 11.♗a3 a5 (11...♗c6!? 12.♗ac2
♗xd4 13.♗xd4 a5) 12.b5 c5
13.bxc6 bxc6 14.c5 ♖d5 15.♖b3
♗a6 16.h3 ♗h6= Milov,V-Lu,S,
Dubai 2014.

a22) 11.c5 ♖f7 (11...♖d5 12.♗a3
♗c6) 12.♗a3 ♗c6 13.♗xc6

♙xd1 14.♞axd1 ♙xb2 15.♗c4
Lenic,L-Svidler,P, Dubai 2014 15...
bxc6 16.♗xb2 a5

b) 7.♙b2 ♗c6

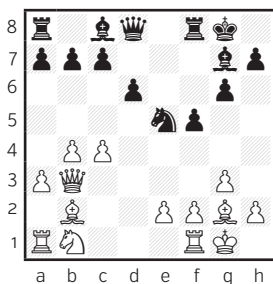
b1) 8.a3 e5 If this works Black usu-
ally equalises at least. 9.dxe5 ♗g4

b11) 10.♗bd2 ♗gxe5 11.♗xe5
♗xe5 (11...dxe5 12.♗b3 e4=)

b11) 12.♗c4 ♙e7 13.♗xe5 dxe5
14.♙d5+ ♖h8 15.♞ad1 Chek-
hov,V-Vyzmanavin,A, Palma de
Mallorca 1989 15...c6 16.♙a5 e4=

b112) 12.e3 ♗f3+ 13.♗xf3
♙xb2 14.♞b1 ♙g7= Golos-
hchapov,A-Malaniuk,V, Or-
dzhonikidze 2001.

b12) 10.c4 ♗gxe5 (10...♗cxe5
11.♙c2 ♙e7 12.♗bd2 Volos-
hin,L-Malaniuk,V, Pardubice 1998
12...f4=) 11.♗xe5 ♗xe5 12.♙b3

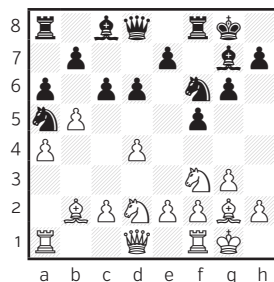


12...c6 It often happens in the
Leningrad Dutch that the rela-
tive weakness of d6 is compen-
sated for by the weakness of the

c4-pawn. 13.♗d2 ♙e6 14.♞ad1 Kh-
lian,E-Malaniuk,V, Saratov 2006.

b2) 8.b5 Black will be able to ex-
change this pawn. 8...♗a5 9.♗bd2
a6 (9...c6 10.bxc6 bxc6 11.c4 Kram-
nik,V-Reinderman,D, Wijk aan Zee
1999 11...♗e4=) 10.a4 (10.bxa6 ♞xa6
11.c4 e6 12.♙c2 ♙d7= 13.♞ac1 ♙e8
14.♞fe1 Gofshtein,L-Bosch,J, Hoo-
geveen 1998 14...♙a4 15.♙b1 h6=)

b21) 10...c6 can be tried as well.



11.bxc6 bxc6 12.c4 ♞b8 (12...♗e4
13.♙c2 d5=) 13.♙c3 ♗e4 14.♗xe4
fxe4 15.♗d2 ♙e6=

b22) 10...♙d7 11.c4 c6 12.bxc6
♙xc6 The position offers mutual
chances.

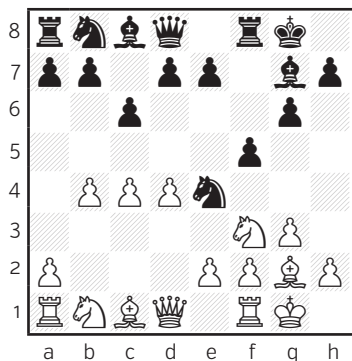
b221) 13.♗g5 ♙xg2 14.♙xg2
♙b6 15.♙c2 ♞fc8 16.♞fc1 ♙c6+
17.♙g1 b5= Sakaev,K-Mastrovas-
ilis,A, Rijeka 2010.

b222) 13.d5 ♙d7 14.♙b1 (14.♙c2
♞c8 15.♙d3 Milov,V-Malaniuk,V,
Ajaccio 2006 15...b6 16.♙d4
♗b7=) 14...♞c8 15.♞c1 ♗g4
(15...♙b6! Black aims to swap

queens. 16.e3 ♖e4 17. ♗xg7 ♖xb1
18. ♖axb1 ♗xg7 19. ♖xe4 fxe4
20. ♖d2 ♗xa4=) 16. ♗xg7 ♗xg7
17. ♖b2+ ♗g8 18.e3 ♖c5 19.h3
♖f6 Kasimdzhanov,R-Malani-
uk,V, Ajaccio 2006 20. ♖e1±

7.c4 ♖e4

Black doesn't show yet what he intends to do on the queenside. 7...a5?! I do not like this move here. 8.b5 d5 9. ♖c3 dxc4 10. ♖a4 ♗e6 11. ♖g5 (11. bxc6 ♖xc6 12. ♖g5 ♖xd4∞) 11... ♗d5 12.bxc6 bxc6 13. ♖xd5 cxd5 14. ♖e6 ♗e8 15. ♖xe8 ♖xe8 16. ♖c7 ♖c6±



8. ♖b3

White may not want to develop the bishop to b2.

a) 8. ♗b2 The bishop is somewhat passive here. 8...a5 9.a3 (9.b5 cxb5 10.cxb5 d5 11. ♖b3 ♗e6 12. ♖c3 ♖d7 13. ♖xe4 13...a4!)=) 9...d5

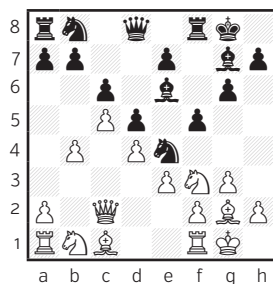
a1) 10. ♖b3 axb4 11.axb4 ♖xa1
12. ♗xa1 dxc4 (12... ♗e6 13.c5 b6=)
13. ♖xc4+ ♖d5=

a2) 10. ♖bd2 ♗e6 (10...axb4 11.axb4 ♖xa1 12. ♖xa1 dxc4 13. ♖xc4 ♗e6 14. ♖ce5 ♖b6=) 11. ♖c2 ♖xd2 12. ♖xd2 dxc4 13. ♖xc4 axb4 14.axb4 ♖a6 15. ♖fd1 ♖xb4 16. ♖b3 ♖xa1 17. ♗xa1 b5 18. ♖xb4 ♗xc4 ♖ Savchenko,S-Firman,N, Dresden 2007.

b) 8. ♖c2 d5

b1) 9. ♖bd2 ♗e6 (9...a5 10.b5 cxb5 11.cxb5 ♗e6=) 10.c5 a5 11.bxa5 ♖xa5 12. ♖b3 ♖a4 13. ♗f4 ♖d7 14. ♗e5 Jessel,S-Le,Q, Baku 2016 14... ♖c4 ♖

b2) 9.e3 ♗e6 10.c5



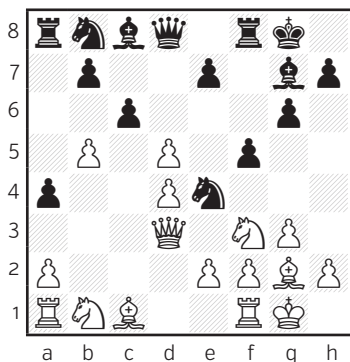
10...a5! Black naturally breaks up White's pawn chain. 11.bxa5 ♖xa5 12. ♗b2 ♖d7 13. ♖bd2 ♖a4 (13...b6∞) 14. ♖b3 ♖fb8 15. ♖fc1 ♗f7 16. ♖e1 b6 17.cxb6 ♖xb6 18. ♖d3 ♖c4 ♖ Dovzik,J-Deglmann,L, Austria 2012.

8...a5 9.b5 a4

An ambitious move. After 9...d5 10. ♖c3 ♗e6 11.cxd5 a4! 12. ♖c2 cxd5 the position would be equal.

10. ♖d3 d5 11.cxd5

11.♘c3 ♙e6 12.cxd5 cxd5 13.♘g5 ♙f7
 14.♙f4 (14.h4 ♘xg5 15.♙xg5 h6
 16.♙f4 e6 17.♖ac1 ♘d7=) 14...♘xg5
 15.♙xg5 h6 16.♙f4 e6 17.♖ac1 g5
 18.♙d2 ♘d7=



11...♙xd5!

The queen is active here.

12.♘c3

The text move is not White's only testing possibility: 12.♘a3 ♘d7 13.♙e3 e5
 14.dxe5 ♘xe5 15.♘xe5 ♙xe5 16.♖ac1

a) 16...♙b2 17.♖c2 ♙xd3 18.exd3 ♙xa3
 19.bxc6 bxc6 20.dxe4 ♙a6 21.♖d1
 ♖ad8=

b) 16...♙xa2 17.♙h6 ♙g7 18.♙xg7
 ♘xg7 19.bxc6 bxc6 20.♖xc6 ♘g8
 White's advantage is symbolic.

12...♘xc3 13.♙xc3 ♙xb5 14.♙a3
 ♙f6 1/2

Here the players agreed to a draw,
 but maybe White would be some-
 what better after 15.♘e5 ♘d7 16.♖ab1

♙a6 17.♙e3, although I think 14...
 ♖e8!? would have been preferable, as
 after 15.♘e5 ♘d7= 16.♖ab1 ♙a6 Black
 would not be worse, as now taking on
 e5 works better.

1.d4 f5 2.♘f3 ♘f6 3.g3 g6
 4.♙g2 ♙g7 5.0-0 0-0

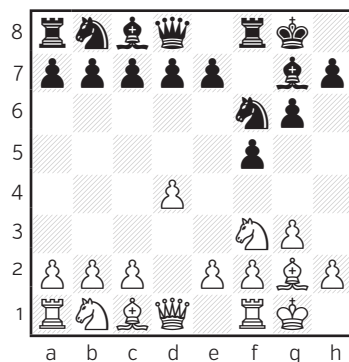
■ Game 2

▷ Ruslan Ponomariov

▶ Mika Karttunen

European Cup, Eilat 2012

1.d4 f5 2.♘f3 ♘f6 3.g3 g6 4.♙g2
 ♙g7 5.0-0 0-0



6.d5

White pushes the pawn quickly. It can
 also be played on the previous move.

6...c6

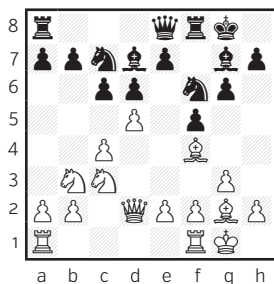
Black naturally wants to undermine the centre. He can transpose to a main line, but can also avoid them.

7.c4 ♖a6 8.♗c3

8.♙e3 ♗g4 9.♙d4 e5=

8...♗c5

Black wants to play ...♗e4 quickly. After 8...♙e8!? Black may want to carry out ...e5 without ...d6, taking back on e6 with the d-pawn. 9.♙f4 The bishop stops ...e5, but otherwise it doesn't stand well. (9.h3 e5 10.dxe6 ♙xe6 11.b3 ♗c5=) 9...d6 10.♗d4 ♙d7 11.♙d2 ♗c7 (11...♗c5 12.♙ac1 a5=) 12.♗b3



12...cxd5 (12...♙c8!? or 12...♙f7 This queen move forces White to defend the d5-pawn. 13.♙ac1 cxd5 14.cxd5 b6= Black stops ♗a5.) 13.cxd5 a5 14.♙ac1 ♙d8 (14...b5 15.♗b1!±) 15.♗d4 ♙h8 16.♙fd1 ♙e8 17.b3 ♙f7 18.♗f3± Eingorn,V-Ragozin,E, Berlin 1992.

9.♙e3

9.♙b1 ♗fe4 10.♗xe4 ♗xe4 11.♙d3 e5=

9...♗ce4 10.♗xe4 ♗xe4 11.♙c2

White is a bit stronger in the centre and this gives him a small edge.

11.♙d4 c5 (11...♙xd4 12.♗xd4 e5 13.♗b3 ♗f6 14.♙c1 e4=) 12.♙xg7 ♙xg7 13.♗d2 ♗f6 14.e4 d6 15.♙e1 ♙b8 16.e5 Hulak,K-Fauland,A, Sibernik 2014; 11.♗g5 cxd5 12.cxd5 ♗d6 13.♙d4±

11...♙c7

11...d6 12.dxc6 (12.♗g5 ♗xg5 13.♙xg5 c5=) 12...bxc6 13.♗d2 d5 14.♗xe4 dxe4=

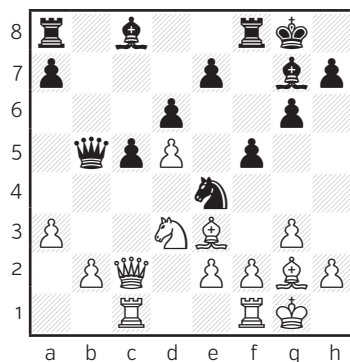
12.♙ac1 c5 13.♗e1 d6 14.♗d3 ♙a5

14...♙b8 15.a3 ♙d7 16.b4 b6 17.♗f4±

15.a3 b5

15...♙d7 16.♗f4 (16.f3 ♗f6) 16...b5 17.♙xe4 fxe4 18.♙xe4 ♙f7±

16.cxb5 ♙xb5



17.b4

White opens the position because Black is not yet fully developed.

17...cxb4 18.♘xb4± ♘c3 19.♖fe1
 ♙b7 20.♚d2 ♘e4 21.♚d3 ♚xd3
 22.exd3 ♘c3 23.♙d2 a5 24.♘c6
 ♘a4 25.♗xe7 ♙a6 26.d4 ♙b5 27.♗b1
 ♙d3 28.♗bb7 ♙f6 29.♗e6 ♙a6
 30.♗c7 ♗f7 31.♙xa5 ♙b5 32.♗xd6
 ♙xc6 33.dxc6 ♗xa5 34.♗xf7 ♖xf7
 35.c7 ♖e7 36.♗xf6 ♖d7 37.♗c6 ♖c8
 38.♙f1 1-0

1.d4 f5 2.♘f3 ♘f6 3.g3
 g6 4.♙g2 ♙g7 5.0-0 0-0
 6.♘bd2

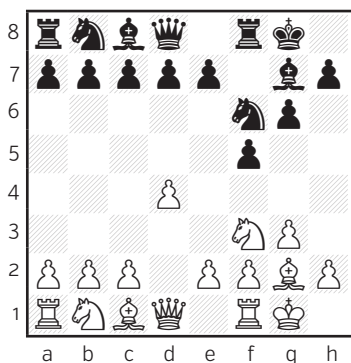
■ Game 3

▷ **Michael Richter**

▶ **Vallejo Francisco Pons**

Rapid World Championship,
 Berlin 2015

1.d4 f5 2.♘f3 ♘f6 3.g3 g6 4.♙g2
 ♙g7 5.0-0 0-0



6.♘bd2

White wants to carry out e4.

6...e6

With this pawn move Black gets ready to go for the Stonewall formation, though he might still play ...d6 and ...e5.

a) 6...a5 When I was a player, I planned to try this idea; Black wants to gain space and considers ...b6. The move allows ...♗a7 if White plays ♘e5. 7.♗e1 (7.c3 b6) 7...d5.

b) 6...♘c6 This move is flexible as Black can configure his pawns in several ways and the knight undeniably affects the centre.

b1) 7.c3 d6 See 6.c3 d6 7.♘bd2

b2) 7.b3 e6 8.♙b2 d5 The Stonewall setup is nice here. 9.c4 b6 10.♗c1 ♙b7 11.a3 Szekely,P-Dzhumaev,M, Abu Dhabi 2001 11...a5 (11...♘e4 12.b4 ♚e7∞) 12.♘e1 ♘e4 13.e3 a4 14.b4 ♘xd2 15.♚xd2 dxc4 16.♗xc4 ♘e5=

b3) 7.♘c4 White wants to make sure that Black will not play ...e5.

b31) 7...d6

b311) 8.c3 ♚e8 9.b4 a6 (9...♘d8 10.a4 ♘f7=) 10.♚b3 ♖h8 11.♗d1 e5=

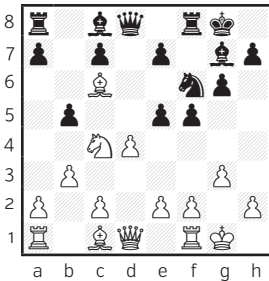
b312) 8.b3

b3121) 8...♙d7 9.♙b2 b5∞

b3122) 8...e5 Players looking for original ideas might want to

try this risky idea. 9.dxe5 ♖e4
 10. ♕a3 (10... ♔d5+ ♖h8 11. ♕b2
 ♜e8 12.exd6 ♕xb2 13. ♗xb2 ♜f6
 Black has compensation for the
 pawn.) 10... ♕e6 (10... ♜e8 11.exd6
 cxd6 12. ♕b2 d5=) 11. ♜d3 ♜e8
 Black can choose between sacri-
 ficing or winning an exchange.
 (11... dxe5 12. ♕xf8=) 12.exd6
 ♕xa1 13. ♜xa1 cxd6=

b3123) 8...b5 9. ♗fe5 (9. ♗e3
 ♗e4=) 9...dxe5 10. ♕xc6



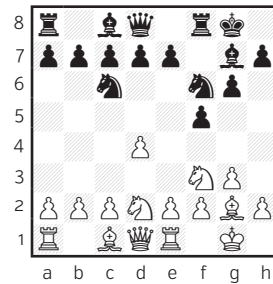
10...exd4 Black can sacrifice an
 exchange here as White's rooks
 have no open files. 11. ♕xa8 bxc4
 12. ♕c6 (12.bxc4 ♕a6=) 12... ♗e4
 13. ♕b5 ♕e6=

b313) 8. ♕g5 ♗e4 9.d5 ♗xg5 It
 is nice to have the bishop pair.
 10. ♗xg5 ♗e5 11. ♗xe5 ♕xe5
 12.c3 ♕f6 13. ♗f3 e5 14.dxe6 c6
 15. ♗d4 d5 16.e3 ♜e7= Zvjagin-
 sev,V-Vyzmanavin,A, Kazan 1995.

b32) 7...e6 8.c3 d6 9.b4 Neck-
 ar,L-Knezevic,M, Prague 1983 9...
 b5 (9... ♗e4 10. ♜c2 a6 11.a4 e5=)
 10. ♗e3 a5 11. ♗e5 dxe5 12. ♕xc6
 ♜a6 13. ♕xb5 ♜b6 14.dxe5 ♜xb5=;

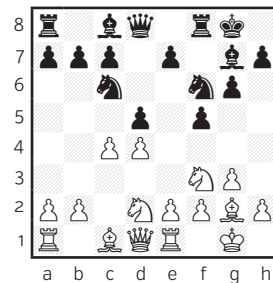
b4) 7.c4 The combination of c4 and
 the knight on d2 renders the steed
 somewhat passive. 7...d6 8.d5 ♗e5
 9. ♜b1 ♖h8 (9...e6=) 10.b3 ♗xf3+
 11. ♗xf3 ♗e4 12. ♕b2 e5 13.dxe6
 ♕xe6 14. ♕xg7+ ♖xg7 15. ♜d4+ ♜f6
 16. ♜bc1 a5 17. ♜xf6+ ♖xf6 18. ♗d4
 ♜fe8 19. ♜fd1 ♕f7 20. ♖f1 ♜e7
 21. ♗b5 ♜c8 1/2 Tregubov,P-Malani-
 uk,V, Krasnodar 1999.

b5) 7. ♜e1 White wants to carry out e4.



b51) 7...g5?! The number one Hun-
 garian player comes up with an en-
 tertaining, but probably bad idea.
 8. ♗xg5 ♗xd4 9.c3 ♗c6 10.e4 h6
 Fedorovsky,M-Rappoport,R, Germa-
 ny 2016 11. ♗gf3±

b52) 7...d5 8.c4



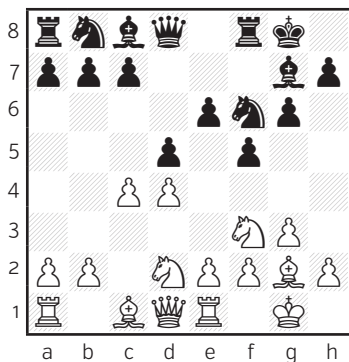
8...♙h8 Black gets ready to open the position and makes room for the bishop. (8...e6 9.b3 ♖e4 10.♙b2 a5=) 9.cxd5 (9.a3 dxc4; 9.b3 ♙e6) 9... ♖xd5 10.e3 (10.♖c4 ♖b6 or 10.♖b3 f4∞) 10...a5 11.b3 Grigorov,G-Malaniuik,V, Galatzi 2007 11...a4 12.♙a3 ♙e6 13.♙b1 ♖b6∞

7.♙e1 d5

Black stops e4.

8.c4

8.♖e5 c5



8...♖c6

Black takes away the e5-square from the white knight.

9.e3

9.b3

a) 9...♖e4 10.♙b2 b6 11.a3 ♙b7 12.♙c1 a5 13.e3 ♙e7 14.♙c2 ♙ac8 15.♙c1 (15.♙e2 ♙a6) 15...♖d8 Black improves the knight by transferring

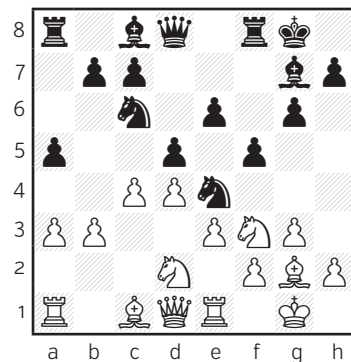
it to f7. 16.♙d1 g5 (16...♖f7 17.cxd5 exd5 18.♖e5 ♖xe5 19.dxe5 ♙xe5=) 17.b4 axb4 18.axb4 ♖f7 19.b5 ♙fd8 20.c5 Rosko,L-Plat,V, Trinec 2014 20...c6=

b) 9...a5 10.♙a3 ♙e8 11.e3 b6 12.♙c2 ♙b7 (12...♖b4 Playing this at once would make it harder to bring the a1-rook into the game. 13.♙b1 c5=) 13.♙ac1 ♙c8 (13...♖b4) 14.♙ed1 ♖e4 15.♖e1 ♖b4 16.♙b1 ♙e7 17.♖df3 c5 18.♙b2 ♙ed8 19.a3 ♖a6= Juhasz,A-Kovacevic,B, Budapest 2017.

9...♖e4

This move opens the diagonal.

10.a3 a5 11.b3



11...g5

Black wants to knock the f3-knight off balance. Developing calmly with 11...♙e7!? or 11...b6!? also look pleasant for Black.

12.♙b2 g4 13.♖e5 ♖xe5 14.dxe5 ♖xd2